

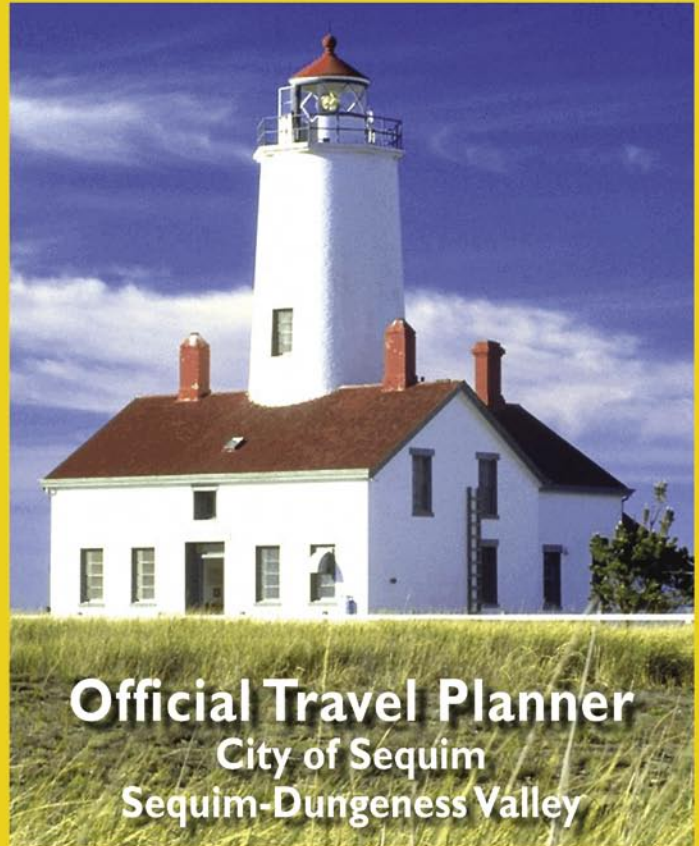
Sequim-Dungeness Chamber of Commerce  
P.O. Box 907 • Sequim, WA 98382-0907  
1-800-737-8462 • [www.visitsun.com](http://www.visitsun.com)

PRSRT STD  
U.S. Postage  
**PAID**  
Olympic Mailing  
Services



# DESTINATION SEQUIM

W·A·S·H·I·N·G·T·O·N  
EVERYTHING UNDER THE SUN



**Official Travel Planner**  
City of Sequim  
Sequim-Dungeness Valley

[www.visitsun.com](http://www.visitsun.com)

# Greetings and Welcome to the Sequim-Dungeness Valley

Dear Traveler:

What makes Sequim unique and worth a visit? The weather is a major reason! The sun shines here more than anyplace else in western Washington. The “rain shadow,” caused by the Olympic Mountains, protects the valley from the rain that falls east and west of Sequim. Sequim is also the Lavender Capital of North America. So if you like lavender, we have lots of it!

“Sequim”—in the native language of the S’Klallam tribe, “S’Kwim” means “quiet waters.” A perfect name for this valley community located in the sun between the deep waters of the Strait of Juan de Fuca and the breathtaking Olympic Mountains.

You have in your hand a travel planner for Sequim and its surroundings. The suggestions herein spring from our own experiences; trips we took after we settled in Sequim or when friends and family visited us.

We hope you will have enough time to enjoy all the recommendations. But, no matter if you stay one day or two weeks, we are certain you will find beauty, pleasure and recreation in our town.

Welcome!

### Contents

- So Much To See And Do..... 2
- Olympic National Forest..... 2
- 5-Day Travel Planner ..... 3
- Sequim Lavender ..... 5
- Roosevelt Elk Herd ..... 5
- Olympic Discovery Trail..... 6
- Museums & Galleries ..... 6
- Farms & Gardens ..... 7
- Mileage ..... 7
- Maps..... 8
- Sequim Relocation Info ..... 10
- Transportation..... 11
- Lodging Guide ..... 12
- Restaurants ..... 14





©2004 Sequim Marketing Action Committee - City of Sequim  
For Information: Sequim-Dungeness Chamber of Commerce  
P.O. Box 907 • Sequim, WA 98382-0907  
1-800-737-8462 • [www.visitsun.com](http://www.visitsun.com)  
Design: InsideOut Solutions, Inc.  
Cover Photos: Jeff Logan, InsideOut Solutions, Inc.  
Page One Photo: Herb Quinn





Photo: Rosemary's Garden

**Enjoy** the many farm activities in and around sunny Sequim. The Sequim sun encourages flower and vegetable farmers to grow their colorful crops in abundance for show and U-pick.



Photo: Rosemary's Garden



Photo: Jim McCauley

**Lavender**, Sequim's official flower, is so prominent that Sequim is the Lavender Capital of North America. Lavender is available for U-pick from July to October 1st, and products are available year round.



Photo: InsideOut Solutions

**Bicycle** Sequim, with its uncrowded, gently rolling terrain or scenic mountain bike trails. Perfect for families is the Olympic Discovery Trail between Sequim and Port Angeles.



Photo: InsideOut Solutions



Photo: InsideOut Solutions

**Golf** is one of the more popular sports in Sequim, with the driest, longest playing season in the State of Washington. Sequim has two public courses and one private course.

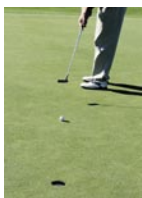


Photo: InsideOut Solutions

## Olympic National Forest

**Sequim** is the northern gate to the Olympic National Forest. ONF has high mountain meadows alive with spring wildflowers and crystal clear, clean, cold mountain lakes filled with spirited trout. ONF has unbelievable views—it is possible to view downtown Seattle, Hood Canal, Mt. Rainier and the San Juan Islands. Sequim is located between two major trailheads, Gray Wolf Trail and Dungeness



Photos: Olympic National Forest



## So Much To See And Do In Sequim

**Sequim** is also world renowned for its strawberry, raspberry and blackberry crops. Farms are open for U-pick from early June to September.

Photo: Valerie Henschel



Photo: InsideOut Solutions



**Feast** on our native Dungeness Crab. Extend your stay at our award winning motels or bed & breakfasts.

Photo: Clallam County EDC



**A farm** that is more than "bearly" different is the Olympic Game Farm, home to many world famous animal actors. Tours daily.



Photo: Erwin & Peggy Bauer

**Sequim** loves to celebrate. There is the Olympic Chocolate Festival on the third weekend of April, Irrigation Festival in early May, the Lavender Festival in July, the Harvest Festival in October and so much more.

**Wineries** have been a part of Sequim for over 25 years. Olympic Cellars is open for tasting year round and hosts numerous events. Lost Mountain Winery is open for tasting during the summer and on weekends the rest of the year.



Photo: InsideOut Solutions



Photo: Dave Logan

## Suggested 5-Day Travel Planner In and Around The Sequim-Dungeness Valley

### ■ Day One

**Visit The Farms** - The Sequim-Dungeness Valley has a variety of farms to visit or tour and is becoming the Lavender Capital of North America. You and your family can visit the Olympic Game Farm or lavender farms. There are organic farms, herb farms, llama ranches and U-pick flower farms. A famous American chef once said, "The best berries in the US are grown on the Olympic Peninsula." The valley has raspberry, strawberry, blackberry and blueberry farms. We have included a fairly accurate list of farms that are open during the year on page 7. They are keyed to the map in the center of this planner so you can plan your farm tour based on the route you wish to take or the season when you visit.



Photo: Valerie Henschel



Photo: Valerie Henschel/Jardin du Soleil

### ■ Day Two

#### Downtown Sequim & Local Cuisine -

Take a day out for shopping around town. There are many gift shops within easy walking distance from the center of town (where Sequim Avenue and Washington Street cross).



Photo: Sequim 2000

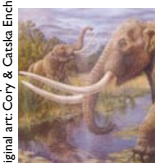


Photo: Bob Cooper Original art: Cory & Castella Ench

Several murals depict some of Sequim's history and its early settlers and give you an idea of the flora and fauna around us. Visit the Open Aire Market on Saturdays where local growers sell fresh produce and artisans sell their handcrafted items. Drive from mid-town a few blocks east or west and you'll find more shops. There are dozens of restaurants, ethnic and American, all through town. The Museum & Arts Center, on W. Cedar St., has historical exhibits, art, special events and a state-of-the-

art display on a locally discovered mastodon.



Photo: InsideOut Solutions



Photo: Oak Table Cafe

### Walks and Hikes -

Walk off those great meals with a hike. There are several opportunities to do so, the Dungeness Spit being one of them. From the parking area to the lighthouse at the end of the Spit is a good 5½ miles (one way) of beach walking. Take a picnic lunch with you and enjoy it sitting on a driftwood log or go all the way to the lighthouse where there are picnic tables for your use. The volunteers from the Lighthouse Society take turns staying there a week at a time and will be happy to show you around. Even if you walk only part way



Photo: Valerie Henschel

on the Spit, you will surely enjoy the waves, the driftwood and the seabirds. After your hike back to the car, you just might want to sit in the whirlpool at Sequim's Aquatic Recreation Center (SARC) to soothe those tired muscles. Or walk the Olympic Discovery Trail between White Feather Way and Port Angeles (See page 6).

If you are a Volkssport enthusiast, you can find maps for three year-round Sequim walks at Swain's General Store in Bell Creek Plaza.

### Two other enjoyable walks:

1. The Railroad Bridge Park (at the end of Hendrickson Rd.) has a decked railroad trestle which spans the Dungeness River and provides public access to the river as well as a lovely spot for a picnic. (2½ miles west of city center). The Dungeness River Audubon Center is located here.
2. Marlyn Nelson Park is a county park at the end of Port Williams Rd. Great sand cliffs with many species of sea birds. Public boat launch.



Photo: InsideOut Solutions

### ■ Day Three

#### Birding, Kayaking, Biking -

Sequim is an ideal place for **birdwatchers**. Since it is on one of North America's biggest flyways, an ever-changing variety of birds can be spotted in the valley. Sequim's location has contributed to the Dungeness River Audubon Center being established at Railroad Bridge Park. Over 250 species of birds have been recorded at the Dungeness National Wildlife Refuge on the Dungeness Spit. The local Audubon Society or the Visitor Center have maps of good spots for birding. For more info: [www.olympus.net/opas](http://www.olympus.net/opas)



Photo: Valerie Henschel



Photo: InsideOut Solutions

The Dungeness Spit and Sequim Bay are a **kayaker's** paradise. You can explore many of the local inlets in relatively calm waters. The Spit abounds with sea life of all types. Landings at the lighthouse are a pleasure, but limited in number by the U.S. Fish and Wildlife Dept.; so if you want to land there, make arrangements in advance by calling (360) 457-8451. For additional info: [www.dungenesskayaking.com](http://www.dungenesskayaking.com).



Photo: Kevin Germain

The Sequim Valley is wide and long with gentle hills and beautiful views of both the mountains and the Strait of Juan de Fuca. It provides excellent opportunity for both street and mountain **bicycling**. Generally, the roads in the valley are wide with good shoulders and not too crowded with

**Day Three cont. page 4**



## Suggested 5-Day Travel Planner In and Around The Sequim-Dungeness Valley Day Three continued

autos or other bikers. The weather makes the valley ideal for year-round cycling. Mountain bikers have ample opportunity to try their skills on many Olympic National Forest trails and Dept. of Natural Resources roads. The Olympic Discovery Trail winds through the Dungeness Valley from Sequim to Port Angeles. It is open to biking, hiking and, in some sections, horseback riding. Visit [www.mikes-bikes.net](http://www.mikes-bikes.net) for more information.



Photo: InsideOut Solutions

## Day Four

### Hike Or Bike In The Olympic National Forest

Sequim is located between two main trailheads of the Olympic National Forest: the Dungeness and the Gray Wolf Trails. Stop at the Sequim Visitor Center and buy a day-hike parking pass (\$5). This gives you permission to park your car at the trailhead in the National Forest Service areas. Dungeness Trail is reached via Palo Alto Road or Louella Road and the Gray Wolf via Taylor Cut-off and Lost Mountain Road. Distance to Dungeness Trail is 8.1 miles and to the Gray Wolf Trail is 7.7 miles. Both are relatively easy hikes. Mountain bikes are allowed on a number of trails. See the detailed trail map at the Sequim Visitor Center.



Photo: InsideOut Solutions

## Day Five

### Hurricane Ridge - Olympic National Park

The Ridge is the crown of Olympic National Park. The day lodge is a great trailhead for many paths offering breathtaking views of the glacier-clad peaks of the Olympic Mountains, panoramic views of the Strait of Juan de Fuca and alpine meadows. The trails range from easy to very difficult, making it possible for everyone to enjoy the area's beauty. Take a picnic lunch and spend the day at the Ridge; cap it off by watching an awesome sunset. Although it may not be raining in Sequim, clouds and rain can occur on top of Hurricane Ridge. A call to the park center will tell what the weather is like above the clouds. A clear sunny day makes the experience spectacular. Driving time, starting at the Sequim Visitor Center, is about 1 hour 45 minutes to get up to the 5200 ft. elevation. Please note: The road is sometimes closed in winter due to heavy snow or to allow for snow removal. For more information: [www.nps.gov/olym](http://www.nps.gov/olym)



Photo: NOPVCB/ Valerie Henschel

## More Suggested Trips Around Sequim

**Port Townsend:** It is a 45-minute drive east of Sequim (Highway 101 then left on Highway 20). This "Victorian" seaport town has an easy-going, artsy ambience. The state ferry terminal to Whidbey Island is located here. Travel north through the scenic small towns of Whidbey Island and catch the ferry to the San Juan Islands. On the way back to Sequim, stop at the Seven Cedars Casino for dinner and entertainment.

**Port Angeles:** A 17-mile drive west of Sequim on Highway 101 takes you to Port Angeles. Port Angeles is the gateway to the Olympic National Park and Victoria, B.C. The U.S. Coast Guard calls Port Angeles home and this natural deep water port welcomes ships from all over the world.



Photo: InsideOut Solutions

### Victoria B.C., Canada:

The Victoria Express (passenger only fast ferry) and the Coho Ferry (auto/passenger ferry), provide an easy day trip to our friendly "foreign" neighbor. Visit the famous Butchart Gardens, the Royal B.C. Museum, take "High Tea" at the Empress Hotel and still have time to walk around the lively streets and shopping areas before catching your ferry back to the Peninsula. From Victoria, you can also catch a convenient ferry to the San Juan Islands. Check the ferry websites for up-to-date info on I.D. requirements for international travel.

[www.victoriaexpress.com](http://www.victoriaexpress.com) • [www.cohoferry.com](http://www.cohoferry.com)

**The Hoh Rain Forest:** Located south of the City of Forks on the west coast of the Peninsula, the Hoh Rain Forest is just about a must-see. Driving time from Sequim is about 2 hours, part of it along beautiful Lake Crescent. The Hoh is the largest rain forest in the continental United

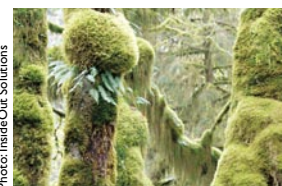


Photo: InsideOut Solutions

States. Trees, hundreds of years old with trunks wider than a person can embrace, create wonder and awe. There are several relatively short and easily accessible walks mapped out. Park rangers give group tours and tell you about flora and fauna.

*These are just a few of the many things to see and do in the Sequim area. Stop at the Visitor Center for more information. We hope you can enjoy them all!*

*There is an admission fee to the National Park (Hurricane Ridge, etc.). Don't lose that ticket; it is valid for 7 days and you can use it to get into the other entrances to the Park, for instance, the Hoh Rain Forest.*

*The visit to the Dungeness Spit also requires a small fee. (The money is used by the Fish and Wildlife Department to provide a healthy wildlife refuge for migrating birds).*

## Sequim: Lavender Capital of North America



Photo: Keith Lazelle / Purple Haze Lavender Farm

Open Aire Market, where they had their first Lavender Festival. The farmers demonstrated the uses of this unique herb, sold lavender bundles and their lavender products. The Sequim Lavender Festival, always held the third weekend of July, has continued to grow into one of the best events on the



Photo: Valerie Henschel / Jardin du Soleil Lavender

The Sequim-Dungeness Valley is the most ideal lavender growing region in the United States. The climate in Sequim is similar to the climate in the Provence region of France, where commercial lavender is grown for oil and used in most perfumes.

Local farmers in Sequim wanted to save farmland and "open space" in the valley from development. As a solution they began experimenting with various varieties of lavender in 1995. In the summer of 1996 a few lavender farms brought their products to the Saturday



Photo: Oliver's Lavender Farm

West Coast. Visitors can get out on the farms, pick their own bundles, enjoy music, food and relaxation.

Success breeds success and more folks began planting lavender. The valley now boasts over 30 farms, with over 160,000 plants combined. It

has the most concentration of lavender farms in North America. Each farm has had to determine their niche. Did they want to grow lavender for oil, floral bundles, sachets or a combination of products? Each type of product requires different types of lavender.

During the summer months, most farms are open to the public for U-pick. Many have their own farm stores. Each farm, because of its location, topography, varieties of lavender and owner's style, is a unique visit. If lavender is your passion, then there will surely be a lavender farm in Sequim to exceed your expectations.

For more information visit: [www.visitsun.com](http://www.visitsun.com), [www.lavendergrowers.org](http://www.lavendergrowers.org) or [www.lavenderfestival.com](http://www.lavenderfestival.com)

## Sequim Roosevelt Elk Herd



Photo by EL Figg

Sequim is home to a major herd of Olympic Peninsula Roosevelt Elk.

The Sequim elk herd is comprised of approximately 100 Roosevelt elk that consider the Sequim area part of their range. When not in the forest, they graze in farm fields and lawns. Fences do not normally bar their movement.

Roosevelt elk are native to the Olympic Peninsula. Elk are herd animals. A herd offers safety and security because there are many eyes, ears and noses to detect danger. The two major predators of elk are cougars and humans.

The Sequim elk herd is not tame, although they may appear to be. Normally, they avoid close contact with people and generally move away when approached. However, they may show signs of agitation if people get too close, throw things, or when people or cars block what they consider to be an escape route. Caution should be used at



Photo: Valerie Henschel

all times when viewing the elk herd. They can move very rapidly when reacting to danger.

Because the elk roam over a wide area, and split into sub-herds much of the year, it is difficult to know where they may be viewed at any time.

Favorite spots of the elk seem to be along Happy Valley Road and surrounding hills, West Sequim Bay Road, Palo Alto Road, and north toward Port Williams Road.

Some of the Sequim elk wear transmitting radio collars. Radio receivers pick up the elk signals, triggering flashing lights on elk crossing signs on Highway 101, warning motorists when elk are close enough to be a collision danger.

The Sequim Elk herd are beautiful creatures we treasure but also respect, appreciate and admire from afar.

Copy, in part, courtesy of Sequim Elk Habitat Committee



Photo: Valerie Henschel





Photo: InsideOut Solutions

The Olympic Discovery Trail between Sequim and Port Angeles is approximately 25 miles of well packed composite or paved trail that meanders through valleys and across creeks with the glorious Olympic Mountains to the south and the Strait

of Juan de Fuca to the north. Ride your bike, hike, walk or horseback ride (some sections) through woods and pastureland.

The ODT will eventually run from Port Townsend to Lake Ozette on the Pacific Coast. The completed portion of the trail provides an excellent experience and will encourage visitors to come back and use new sections of the trail as it grows to over 100 miles.

## Trail Highlights:

- Be sure not to miss the current starting point of the trail, the Johnson Creek trestle off White Feather Way near the John Wayne Marina. This 410 foot long trestle sits 100 feet above Johnson Creek and was refitted for trail use by the volunteer core of the Peninsula Trails Coalition.
- The trail meanders through three adjoining Sequim parks off Blake Avenue. Carrie Blake Park is home to the Guy Cole mini-convention center, ponds with many ducks, public picnic areas and a wonderful children's playground. Next to Carrie Blake Park is the Yamasaki Sister City Park which features a pond containing a small island with a giant Japanese peace lantern, symbolizing the friendship



Photo: Dee Christensen

between Sequim and Yamasaki. The park next to it is the award winning Waste Water Reuse Park. This new park features many variations of native vegetation, an interpretive center, a band shell for concerts, a cascading fountain and a small pond used for radio-controlled boats in miniature racing regattas. (Parking available)

- Railroad Bridge Park is a railroad trestle saved by volunteer effort for access to the Dungeness River. Home to Washington's first Audubon Center this park is an excellent stop for those interested in birding information. (Parking available)
- Robin Hill Farm County Park is almost half-way to Port Angeles. This wonderful park can be an adventure for the day or just a stop along the trail. It has picnic areas and interpretive signage. (Parking available)
- Deer Park Gateway is a wonderful place to stop for a spectacular view of the Olympic Mountains overlooking Morris Creek. There is no better place to view fall color than this spot.
- Morse Creek Trestle is yet another volunteer-refitted trestle. (Parking available)
- Waterfront Trail: From the Morse Creek parking lot the trail soon becomes the Port Angeles Waterfront Trail which runs along the shore. It follows the Port Angeles waterfront past the Arthur Fiero Marine Science Lab, the Port Angeles Visitors Center and the ferries to Victoria. The Coast Guard Station on Ediz Hook is the current end of the trail.



Photo: InsideOut Solutions



Photo: Dee Christensen

For more information: [www.olympicdiscoverytrail.com](http://www.olympicdiscoverytrail.com)

## Museums and Galleries

### Museums:

#### Museum & Arts Center

175 W. Cedar • (360) 683-8110  
[www.sequimmuseum.org](http://www.sequimmuseum.org)

#### Dungeness River Audubon Center

Railroad Bridge Park • (360) 681-8060  
[www.dungenessrivercenter.org](http://www.dungenessrivercenter.org) • [rivercenter@olympus.net](mailto:rivercenter@olympus.net)



Photo: Bob Cooper  
Original art: Cory & Casika Ench

### Galleries:

**Blue Whole Gallery** 129 W. Washington • (360) 681-6033  
[www.bluewholegallery.tenforward.com](http://www.bluewholegallery.tenforward.com)  
[bluewholegallery@tenforward.com](mailto:bluewholegallery@tenforward.com)

**Native Art Gallery** Jamestown  
S'Klallam Tribe • 1033 Old Blyn Hwy.  
• (360) 681-4640

**Native Art Gallery** Seven Cedars Casino • (360) 681-6728



Photo: InsideOut Solutions

## Sequim-Dungeness Valley Farms & Gardens

Open to public. See maps. Other than during summer, it is advisable to call these farms before you visit to ensure someone is there to greet and help you.



Photo: InsideOut Solutions

### Map Key

- G2 Purple Haze Lavender Farm** - Seven-acre organic farm. Open April–September, 10 am–5 pm. U-pick. Gifts and products in the Drying Shed. On Bell Bottom Road • 683-1714 • [www.purplehazelavender.com](http://www.purplehazelavender.com)  
**SEQUIM DOWNTOWN MAP**
- G3 Cedarbrook Herb Farm** - Washington's first herb farm. Flower and lavender gardens, gift shop and restaurant. Open 7 days a week. South Sequim Ave. & Miller Rd. • 683-7733 • [www.lavenderfarms.com/cedarbrook](http://www.lavenderfarms.com/cedarbrook)  
**SEQUIM DOWNTOWN MAP**
- G4 Graysmarsh Berry Farm** - U-pick lavender, strawberries, raspberries, loganberries, blueberries, and blackberries. Open in season. Woodcock and Holland Rd. • 683-5563 • [www.graysmarsh.com](http://www.graysmarsh.com)  
**SEQUIM / DUNGENESS MAP**
- G5 Jardin du Soleil** - Lavender farm and beautiful gardens. U-pick. Open daily from 10 am–5 pm • 3932 Sequim-Dungeness Wy. • 582-1185  
[www.jardindusoleil.com](http://www.jardindusoleil.com) • **SEQUIM / DUNGENESS MAP**
- G6 Olympic Lavender** - Five-acre lavender farm with U-pick and lavender studio. Views of Olympic Mountains. Open July 1–Aug. 31, 12–5 pm daily. On Marine Dr. near Dungeness Bay. • 683-4475  
[www.olympiclavender.com](http://www.olympiclavender.com) • **SEQUIM / DUNGENESS MAP**
- G7 Hoelotta Hydrangeas** - Enjoy a guided walking tour through over 40 varieties of blooming hydrangeas. September and October by appointment only. • 2133 Towne Road • 683-9446 • [jshowat@olympen.com](mailto:jshowat@olympen.com)  
**SEQUIM / DUNGENESS MAP**

### Map Key

- G8 The Cutting Garden** - Flower farm with hundreds of varieties of self-serve U-Pick flowers, including an acre of lavender. Available for weddings, parties and retreats. Open daylight hours June–Sept. • 303 Dahlia Llama Lane 681-3099 • [www.cuttinggarden.com](http://www.cuttinggarden.com) • **SEQUIM / DUNGENESS MAP**
- G9 Robert & Laurel Ann's Rainbow Farm** - Certified organic blackberries, pears, veggies and lavender. Open weekends after Memorial Day through September, or by appointment. • 142 Towne Rd. • 683-6068  
**SEQUIM / DUNGENESS MAP**
- G10 Oliver's Lavender & Herb Farm** - Several varieties of lavender for U-pick. Visit the store, featuring lavender products, dried bundles, loose buds, and live plants. Open year round from 10 am–4 pm. • 82 Cameron Acres Lane • 683-6765 or 683-5483 • [www.oliverslavenderfarm.com](http://www.oliverslavenderfarm.com)  
**SEQUIM / DUNGENESS MAP**
- G11 Lost Mountain Lavender** - Three-acre lavender farm. U-pick lavender. "The Cottage" gift shop features local lavender products and wheel thrown pottery. 1.5 miles south on Taylor Cutoff Rd. • 681-2782  
[www.lostmountainlavender.com](http://www.lostmountainlavender.com) • **SEQUIM / DUNGENESS MAP**
- G12 Olympic Meadow Farms** - Organic garlic, lavender, strawberries, and vegetables. Open year round, 9 am–9 pm. • 154 Bell Meadow Lane 683-9657 • [www.olympicmeadowfarms.com](http://www.olympicmeadowfarms.com)  
**SEQUIM DOWNTOWN MAP**
- G13 Port Williams Lavender** - Over 8,000 plants in bloom open for U-pick throughout the lavender season. Open Saturdays and Sundays. 1442 Port Williams • 582-9196 • [www.portwilliamslavender.com](http://www.portwilliamslavender.com)  
**SEQUIM / DUNGENESS MAP**
- G14 Blue Moon Lavender** - Open weekends 10 am to 5 pm during July and August or by appointment. During Lavender Festival July 15, 16, 17, 2005, open 8am to 7pm. • 3473 Happy Valley Rd. • 681-2271  
[www.blumoonlavender.com](http://www.blumoonlavender.com)  
**SEQUIM / DUNGENESS MAP**

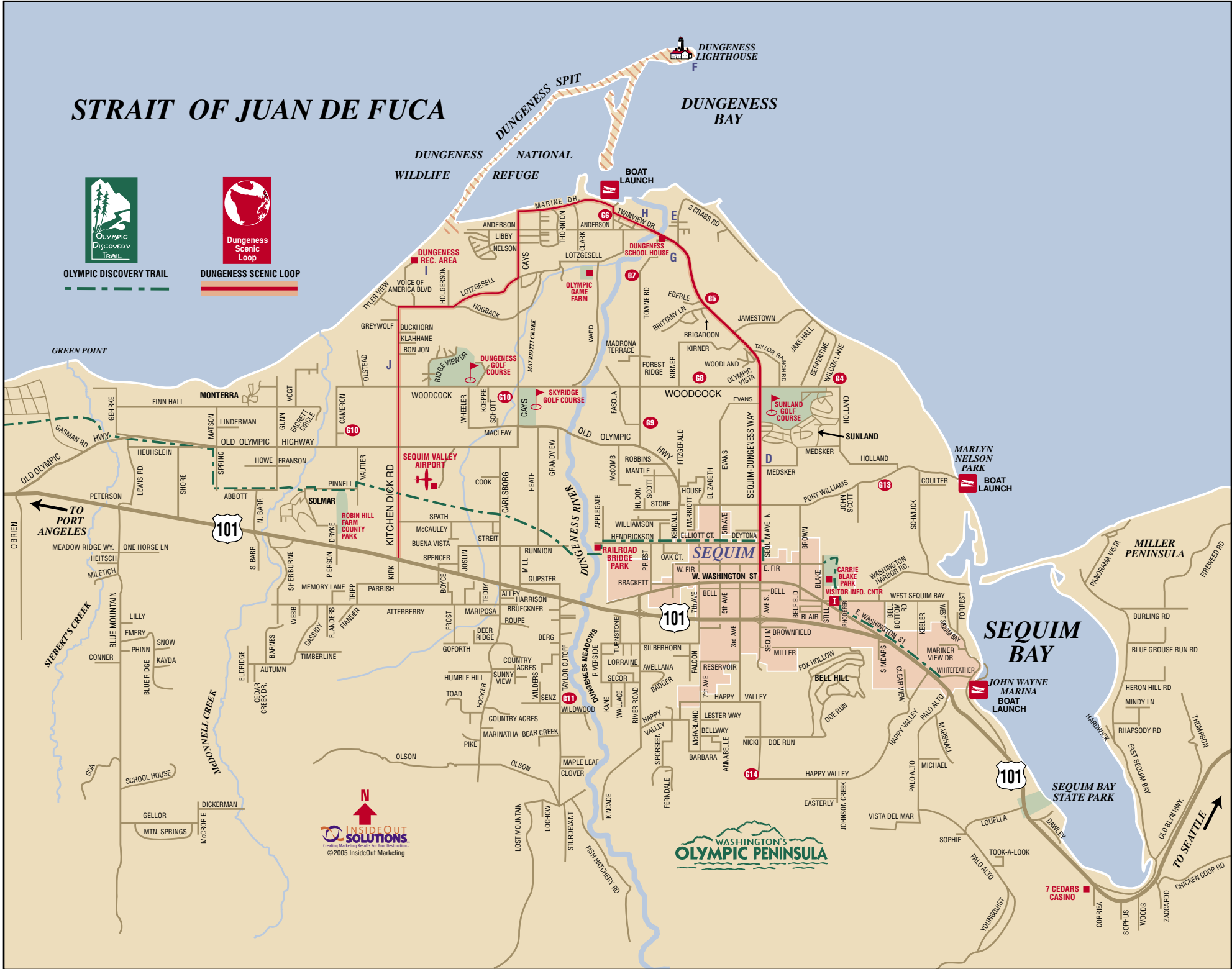
## Mileage - To Sequim

West From	Distance	Time
Port Townsend.....	25 mi.....	35 min.
Hood Canal Bridge .....	33 mi.....	45 min.
Bremerton .....	55 mi.....	1 hr.
Edmonds Ferry (Kingston) .....	45 mi.....	1 hr.
Bainbridge Ferry (Bainbridge) .....	53 mi.....	1 hr. 15 min.
Seattle (via Bainbridge Ferry) .....	61 mi .....	2 hr. (approx.)
Tacoma .....	88 mi.....	2 hr.
Olympia.....	105 mi.....	2 hr. 30 min.

[www.visitsun.com](http://www.visitsun.com)

East From	Distance	Time
Port Angeles .....	17 mi.....	18 min.
Lake Crescent.....	38 mi.....	50 min.
Joyce .....	34 mi.....	45 min.
Forks .....	74 mi.....	1 hr. 30 min.
Clallam Bay/Seki.....	67 mi.....	1 hr. 30 min.
Neah Bay .....	86 mi.....	2 hr. 15 min.
La Push (Pacific Ocean Beaches) .....	89 mi.....	2 hr.
Hoh Rain Forest .....	105 mi.....	2 hr. 20 min.

[www.visitsun.com](http://www.visitsun.com)





# Relocation to Sunny Sequim



Photo: InsideOut Solutions

## Housing

A wide range of housing is ready for you to call home, from luxury estates to mobile homes and condos. There are many building sites for sale as Sequim grows. Home and lot prices are quite reasonable compared to many areas of the country. Ask for a Realtor® listing from the Chamber of Commerce or go to [www.cityofsequim.com](http://www.cityofsequim.com).

## Taxes

There is NO state income tax! Sales tax is collected on all non-food purchases. Property tax is a little over one percent of assessed value.

## Utilities

The City of Sequim provides water, sewer and garbage services. There are many rural properties in the Dungeness Valley where well and septic systems prevail, and trash is picked up by a private contractor. There is no natural gas service, but oil and propane are available from private firms. Electrical power is provided by Clallam County P.U.D.

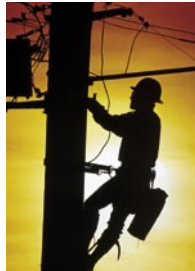


Photo: InsideOut Solutions

## Employment

Sequim's businesses are thriving in the tourism, agriculture, retail and service industries. There are opportunities for employment and the area is very supportive of entrepreneurs and new companies. For more info: [www.clallam.org](http://www.clallam.org).



Photo: InsideOut Solutions

## Communications

The weekly Sequim Gazette is published in Sequim. The Peninsula Daily News, published in Port Angeles, covers Clallam and Jefferson Counties, and is delivered throughout Sequim, as are the major Seattle papers. Sequim receives digital cable

television as well as digital satellite television. Fiber optics have greatly expanded the telecommunication and internet infrastructure. There are local internet service providers, with high-speed internet supplied by public and private entities. Radio reception is good from Victoria and Bellingham stations. For those on the go, cellular phone service is clear and reliable.

## Education

Kids from kindergarten through 12th grade receive a quality education in Sequim's fine, growing school system. Homeschool support groups and private schooling are also available.



Photo: InsideOut Solutions

Peninsula College offers several adult courses in Sequim, and the main campus in Port Angeles is just a short drive away. Some four-year degrees are offered through an arrangement with Western Washington University. The Sequim library is well stocked, with over 120,000 volumes available.

## Organizations

We have over 160 service, fraternal and special interest groups in the area. Many national associations have active branches here. There is a Senior Center providing a wide range of activities. We are proud of the volunteer attitude of our people. Whatever your interest, you'll find plenty of activities in which to get involved.



Photo: InsideOut Solutions

## Churches

We have over 20 churches in Sequim, representing most of the major denominations; more are in surrounding communities. A list is available at the Visitor Center. Our churches are very active in a variety of community programs, and are centers for many social events as well.

## Sequim Aquatic Recreation Center (SARC)

Swimming and a whole lot more is offered at SARC. Facilities include a gym for basketball and volleyball, large and small swimming pools, a hydrotherapy pool, racquetball courts, exercise equipment, and dry sauna. For information: [www.olympen.com/sarc](http://www.olympen.com/sarc)

## Connected

We may enjoy our rural surroundings, but we also enjoy our links to the world. Our location gives us easy access to the major metropolitan areas of Puget Sound, as well as British Columbia.

If you're on-line, be sure to visit our web site at [www.cityofsequim.com](http://www.cityofsequim.com) or try our county website for economic development information at [www.clallam.org](http://www.clallam.org)



Photo: Sequim-Dungeness Chamber

## Health Care

Sequim is one of the best areas for obtaining quality health care. We have state-of-the-art facilities and top notch professionals for any need from a sore throat to cancer therapy. Just about every medical specialty, including alternative medicine, is represented.

Olympic Medical Center operates a full-service hospital in Port Angeles. OMC also has facilities in Sequim including a state-of-the art cancer treatment center. Medical facilities are equipped with the most modern diagnostic equipment.

For those needing continuous assistance, there are several full-time residential facilities. In-home care may be an option for others.

We hope you are in the best of health, but it may be nice to know that any need can be handled with care by our local health professionals. For more information: [www.olympicmedical.org](http://www.olympicmedical.org).



Photo: InsideOut Solutions

## Banana Belt



Photo: InsideOut Solutions

The truth about rain, sun and Sequim: We live in a truly unique spot on the Peninsula. Rainfall increases about 1 inch per mile going west from Sequim and almost as much going east.

Sequim has less rain than L.A. or Salt Lake City! We average 299 days a year with at least some sunshine!

OK, no banana plantations here. We aren't THAT warm. We frequently have overcast days, but when our skies are cloudy most of our neighbors are getting soaked! Sequim even has an official City Ordinance prohibiting bad weather!

## Transportation

The Sequim-Dungeness Valley is easily accessible by air, ferry, boat or auto. Visitors arrive by air through **Fairchild International Airport** located in Port Angeles. **Kenmore Air** provides regularly scheduled service to SeaTac Airport via Boeing Field. The **Sequim Valley Airport** is a 3500 ft. private airport open for public use. Tie downs and aviation gas is available.



Photo: Kenmore Air

The **Victoria Express** (passenger only fast ferry) and the **Coho Ferry** (auto/passenger ferry), provide daily transportation to Victoria, British Columbia.



Photo: Victoria Express



Photo: Port of Port Angeles

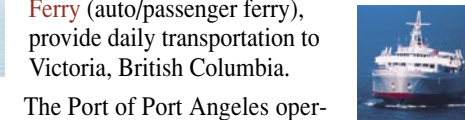
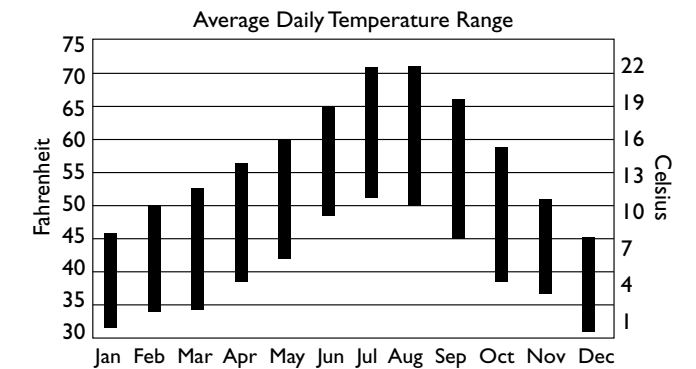


Photo: M.V. Coho

The Port of Port Angeles operates the harbor at **John Wayne Marina**. This easily accessible boat haven for the sailing or boating traveler is close to downtown Sequim, hotels and restaurants.

## Climate

Due to our unique location in the "rain shadow" of the Olympic Mountains, the weather in Sequim is noticeably nicer than in the rest of the area. This "rain shadow" and mild temperatures have made Sequim a very popular retirement and recreation area, and a pleasant tourist destination.



**For More Information Contact:**  
**Sequim-Dungeness Valley Chamber of Commerce**  
P.O. Box 907 • Sequim, Washington 98382-0907  
1-800-737-8462 • [www.cityofsequim.com](http://www.cityofsequim.com)  
E-mail: [info@cityofsequim.com](mailto:info@cityofsequim.com)

For the traveler arriving by air or sea, **Clallam Transit** has regular bus service on the north Olympic Peninsula from Sequim, Port Angeles and Forks. **Sunshine Taxi** provides taxi service and **Budget Rent-a-Car** and **Enterprise Rent-a-Car** provide car rental from Port Angeles and Fairchild Airport.

Most visitors arrive on Highway 101 via the **Washington State Ferries**. **Olympic Bus Lines** provides regularly scheduled bus service to Seattle and SeaTac Airport. There is easy highway access to and from the forests and ocean of the west peninsula, and Seattle is just 2 ½ hours to the east.

**For more information:**  
[www.visitsun.com/transportation.html](http://www.visitsun.com/transportation.html)



Photo: InsideOut Solutions

Lodging Guide

BED & BREAKFAST INNS – Sequim

	Rooms	Dining	Beds	Pets	Suite	Kitchen	Credit	Child	Smoking
<b>Bearheart Inn Bed &amp; Breakfast</b> 1290 Gardiner Beach Road • Sequim, WA 98382 (360) 797-7500 • 1-888-206-0899 • www.bearheartinn.com	2	B	2	N	N	N	Y	Y	N
<b>Carriage House Bed &amp; Breakfast</b> 22 Knight Avenue • Sequim, WA 98382 (360) 681-3087 • www.carriagehousebedandbreakfast.com • E-mail: rasco@olypen.com	1	N	2	N	Y	Y	Y	Y	N
<b>Clark’s Chambers Bed &amp; Breakfast Inn</b> 322 Clark Road • Sequim, WA 98382 (360) 683-4431 • www.olypen.com/clacha • E-mail: clacha@olypen.com	4	B	4	N	N	N	N	Y	N
<b>Diamond Point Inn Bed &amp; Breakfast</b> 241 Sunshine Road • Sequim, WA 98382 (360) 797-7720 • 1-800-310-6322 • www.diamondpointinn.com • E-mail: sandi@diamondpointinn.com	4	B	5	N	Y	N	Y	Y	N
<b>Dungeness Panorama Bed &amp; Breakfast</b> 630 Marine Drive • Sequim, WA 98382 (360) 683-4503 • www.awaterview.com • E-mail: info@awaterview.com	2	B	2	N	Y	Y	N	12+	N
<b>Enzian Bed &amp; Breakfast</b> 2363 Cays Road • Sequim, WA 98382 (360) 681-4122 • www.enzianbnb.com • E-mail: enzian48@att.net	1	B	1	N	N	N	N	N	N
<b>Greywolf Inn</b> 395 Keeler Road • Sequim, WA 98382 (360) 683-5889 • 1-800-914-WOLF • www.greywolfinn.com • E-mail: info@greywolfinn.com	5	B	7	N	Y	N	Y	N	N
<b>Groveland Cottage Bed &amp; Breakfast</b> 4861 Sequim-Dungeness Way • Sequim, WA 98382 (360) 683-3565 • 1-800-879-8859 • www.sequimvalley.com/groveland.mv • E-mail: simone@olypen.com	5	B	5	Y	N	N	Y	Y	N
<b>Helga’s Edelweiss Bed &amp; Breakfast</b> 235 Roberson Road • Sequim, WA 98382 (360) 681-2873 • www.helgasedelweissbnb.com	2	B	2	N	N	N	N	N	N
<b>Lost Mountain Lodge Bed &amp; Breakfast</b> 303 Sunny View Drive • Sequim, WA 98382 (360) 683-2431 • www.lostmountainlodge.com • E-mail: getaway@lostmountainlodge.com	4	B	8	N	Y	Y	Y	12+	N
<b>Red Caboose Getaway</b> 24 Old Coyote Way • Sequim, WA 98382 (360) 683-7350 • www.redcaboosegetaway.com • E-mail: info@redcaboosegetaway.com	5	B	5	N	Y	N	Y	N	N

BED & BREAKFAST INNS – Between Sequim & Port Angeles

<b>A Hidden Haven</b> 1428 Dan Kelly Road • Port Angeles, WA 98362 (360) 452-2719 • 1-877-418-0938 • www.ahiddenhaven.com • E-mail: stay@ahiddenhaven.com	5	B	5	N	Y	Y	Y	Y	N
<b>BJ’s Garden Gate</b> 397 Monterra Drive • Port Angeles, WA 98362 (360) 452-2322 • 1-800-880-1332 • www.bjgarden.com • E-mail: bjgarden@olypen.com	5	B	5	N	Y	N	Y	N	N
<b>Colette’s Bed &amp; Breakfast</b> 339 Finn Hall Road • Port Angeles, WA 98362 (360) 457-9197 • 1-877-457-9777 • www.colettes.com • E-mail: colettes@olypen.com	5	B	5	N	Y	N	Y	13+	N
<b>Domaine Madeleine Bed &amp; Breakfast</b> 146 Wildflower Lane • Port Angeles, WA 98362 (360) 457-4174 • 1-888-811-8376 • www.domainemadeleine.com • E-mail: stay@domainemadeleine.com	5	B	6	N	Y	N	Y	12+	N
<b>The Meadows Inn</b> 3182 Blue Mountain Road • Port Angeles, WA 98362 (360) 417-8074 • 1-866-417-8074 • www.themeadowsinn.com • info@themeadowsinn.com	3	B	3	N	Y	N	Y	N	N

MOTELS

	Rooms	Dining	Beds	Pets	Suite	Kitchen	Credit	Child	Smoking
<b>Dungeness Bay Motel</b> 140 Marine Drive • Sequim, WA 98382 (360) 683-3013 • 1-888-683-3013 • www.dungenessbay.com • E-mail: relax@dungenessbay.com	6	N	12	N	Y	Y	Y	Y	N
<b>Econo Lodge</b> 801 E. Washington St. • Sequim, WA 98382 (360) 683-7113 • 1-800-488-7113 • www.sequimeconolodge.com • E-mail: info@sequimeconolodge.com	43	N	66	Y	Y	Y	Y	Y	Y
<b>Greathouse Motel</b> 740 E. Washington St. • Sequim, WA 98382 (360) 683-7272 • 1-877-683-7272	20	N	29	Y	N	Y	Y	Y	Y
<b>Great Links Resort</b> 1963 Woodcock Rd. • Sequim, WA 98382 (360) 683-7337 • www.greatlinksresorts.com • E-mail: greatlinksdungeness@glrvoa.com	7	B/L/D	7	N	Y	Y	Y	N	N
<b>Juan de Fuca Cottages</b> 182 Marine Drive • Sequim, WA 98382 (360) 683-4433 • www.juandefuca.com • E-mail: juandefuca@olypen.com	6	N	14	Y	Y	Y	Y	Y	N

Lodging Guide

MOTELS

<b>Ramada Limited</b> 1095 E. Washington St. • Sequim, WA 98382 (360) 683-1775 • 1-800-683-1775 • www.sequimramada.com • E-mail: info@sequimramada.com	61	N	114	N	Y	N	Y	Y	Y
<b>Red Ranch Inn</b> 830 W. Washington St. • Sequim, WA 98382 (360) 683-4195 • 1-866-683-4195 • E-mail: redranch@olypen.com	56	N	80	Y	Y	Y	Y	Y	Y
<b>Sequim Bay Lodge</b> 268522 Hwy. 101 • Sequim, WA 98382 (360) 683-0691 • 1-800-622-0691	54	D	82	Y	Y	N	Y	Y	Y
<b>Sequim West Inn</b> 740 W. Washington St. • Sequim, WA 98382 (360) 683-4144 • 1-800-528-4527 • www.olypen.com/swi • E-mail: swi@olypen.com	34	N	60	Y	Y	Y	Y	Y	Y
<b>Sundowner Motel</b> 364 W. Washington St. • Sequim, WA 98382 (360) 683-5532 • 1-800-325-6966 • Fax: (360) 683-9727 • www.sequimsundowner.com	33	N	46	Y	Y	N	Y	Y	Y

CABINS & COTTAGES

	Cab / Cot.	Dining	Beds	Pets	Suite	Kitchen	Credit	Child	Smoking
<b>All Aboard Caboose Inn</b> 434 Bear Creek Estates Rd. • Sequim, WA 98382 (360) 683-5864 • www.allboardcabooseinn.com • E-mail: stay@allboardcabooseinn.com	1	N	2	N	Y	Y	N	Y	N
<b>Angel’s Rest Olympic Cabin</b> Sequim, WA 98382 (360) 582-9663 • www.sequimretreats.com • E-mail: cindy@lapawspa.com	1	N	2	Y	N	Y	N	Y	N
<b>Beach Garden Cottage</b> 1052 Jamestown Beach Rd. • Sequim, WA 98382 (360) 683-2585 • www.beachgardencottage.com • E-mail: tozzter@olypen.com	1	N	1	N	Y	Y	Y	Y	N
<b>Discovery View Cottage</b> Diamond Point • Sequim, WA 98382 (360) 681-0550 • www.home.earthlink.net/~lucybailey • E-mail: discoveryview@earthlink.net	2	N	2	N	Y	Y	Y	Y	N
<b>Kinder Farm Vacation Rental</b> 1074 Hooker Road • Sequim, WA 98382 (360) 683-7397 • www.kinderfarm.com • E-mail: info@kinderfarm.com	4	N	4	Call	Y	Y	N	Y	N
<b>Nelson’s Duckpond &amp; Lavender Farm</b> 73 Humble Hill Rd. • Sequim, WA 98382 (360) 681-7727 • www.nelsonsduckpond.com • E-mail: info@nelsonsduckpond.com	2	N	5	N	Y	Y	N	Y	N
<b>Rancho Lamro</b> 1734 Woodcock Rd • Sequim, WA 98382 (360) 683-8133	2	N	3	N	N	N	N	N	N
<b>Sequim Bay Resort</b> 2634 W. Sequim Bay Road • Sequim, WA 98382 • 2 night minimum (360) 681-3853 • www.sequimbayresort.com • E-mail: sequimbayresort@yahoo.com	8	N	21	N	N	Y	N	Y	Y
<b>Sunset Marine Resort</b> 40 Buzzard Ridge Road • Sequim, WA 98382 (360) 681-4166 • www.sunsetmarineresort.com • E-mail: info@sunsetmarine.com	5	N	15	N	Y	Y	Y	Y	N
<b>1916 Farm House</b> Near Dungeness Spit • Sequim, WA 98382 (360) 683-2431 • www.lostmountainlodge.com • E-mail: getaway@lostmountainlodge.com	1	N	8	N	Y	Y	Y	Y	N

RV PARKS

	Sites	Pull-thrus	Full Hook-ups	TV	RR/Showers	Laundry	Store	Tents	Credit
<b>Diamond Point RV Resort</b> 294 Industrial Parkway • Sequim, WA 98382 (360) 681-0590 • Fax: (360) 681-4673 • E-mail: dp@kmresorts.com	81	20	54	Y	Y	Y	N	Y	N
<b>Dungeness Recreation Area - County Park</b> Voice of America Road (off Kitchen-Dick Road) • Sequim, WA 98382 (360) 683-5847	65	12	0	N	Y	N	N	Y	N
<b>Gilgal Oasis RV Park</b> 400 S. Brown Rd. • Sequim, WA 98382 (360) 452-1324 • www.gilgaloasisrvpark.com • E-mail: info@gilgaloasisrvpark.com	28	19	28	Y	Y	Y	N	N	Y
<b>Idle Wheels RV Park</b> 530 W. Washington St. • Sequim, WA 98382 Phone / Fax: (360) 683-4276	20	0	20	Y	Y	Y	N	N	N



# Lodging Guide

## RV PARKS (cont’)

**Rainbow’s End RV Park**    261831 Hwy. 101 • Sequim, WA 98382  
(360) 683-3863 • E-mail: rainbowrv@olypen.com • www.rainbowsendrvpark.com

**Sequim Bay Resort**    2634 W. Sequim Bay Road • Sequim, WA 98382  
(360) 681-3853 • E-mail: anledepo@altavista.com

**Sequim Bay State Park**    Washington St. State Park • 269035 Highway 101 • Sequim, WA 98382 •  
(360) 683-4235 • 1-888-226-7688 • www.parks.wa.gov/sequim.htm

**Sequim West Inn**    740 W. Washington St. • Sequim, WA 98382  
(360) 683-4144 • 1-800-528-4527 • www.sequimwestinn.com • E-mail: swi@olypen.com

## RV PARKS – Between Sequim & Port Angeles

**KOA Kampground**    80 O’Brien Road • Port Angeles, WA 98362  
(360) 457-5916 • 1-800-562-7558 • www.koa.com/where/wa/47128.htm

## VACATION RENTALS

**Action Property Management / Vacation Rentals**    720 E. Washington, Suite 110 • Sequim, WA 98382  
*2 & 3 Bedroom vacation rentals - Call for availability* • (360) 681-4737 • www.sunnysequim.com • E-mail: action@sunnysequim.com

**Brigadoon Vacation Rentals**    62 Balmoral Court • Sequim, WA 98382 • (360) 683-2255  
Rents cabins and cottages for short term or long term visits • 1-800-397-2256 • Call for availability • www.sequimrentals.com • E-mail: info@sequimrentals.com

**Groveland Cottage Bed & Breakfast / Vacation Rentals**    4861 Sequim-Dungeness Way • Sequim, WA 98382  
*Cabins and cottages. Call for availabilty* • (360) 683-3565 • 1-800-879-8859 • www.sequimvalley.com/groveland.mv • E-mail: simone@olypen.com

# Restaurants

## NAME

**Applebee’s Restaurant**    130 River Rd. • 683-9090 • www.applebees.com

**Baja Cantina**    820 W. Washington St. • 683-1794

**Burger King**    680 W. Washington St. #6 • 683-7871

**Café Café**    755 W. Washington St. • 681-3132

**Chinese Garden**    271 S. 7th Ave. • 683-4525

**Coneheads**    291 W. Washington St. • 683-1232

**Dairy Queen**    720 W. Washington St. • 681-0250

**Danny’s Country Place**    609 W. Washington St. • 683-1950

**Domino’s Pizza**    755 W. Washington St. #B • 582-1600

**Dungeness Restaurant**    1965 Woodcock Rd. • 683-3331

**Dupuis Restaurant**    256861 Hwy 101 • 457-8033 • www.dupuisrestaurant.com

**Dynasty Chinese Restaurant**    Bell Creek Plaza • 683-6511

**Eclipse Cafe**    139 W. Alder St. • 683-2760

**El Cazador**    531 W. Washington St. • 683-4788

## MEALS

B (weekends)/L/D

L/D

B/L/D

B/L/D

D

B/L/D

L/D

B/L/D

L/D

B/L/D

L (weekends)/D

L/D

B/L

L/D

## CUISINE

American

Mexican/Southwest

Fast Food

Espresso, S & S

Chinese

Fast Food, Softserve

Fast Food

Chicken, Ribs

Take-Out Pizza

Steaks, Seafood

Steak, Seafood, Sunday Brunch

Chinese

American

Mexican, American

## NAME

**Elements Cafe**    921 E. Hammond • 681-5060

**Flipper’s Restaurant**    261491 Highway 101 • 683-6015

**Fortune Star**    145 E. Washington St. • 681-6888

**Gabby’s Java & Gourmet Grub**    471 Business Park Loop • Carlsborg • 683-8839

**Gwennie’s**    701 E. Washington St. • 683-4157

**Hurricane Coffee Co.**    104 W. Washington St. • 681-6008

**Hwy. 101 Diner**    392 W. Washington St. • 683-3388

**Jack in the Box**    1280 W. Washington St.

**Jean’s Deli**    134 S. Second Ave. • 683-6727

**Khu Larb Thai**    120 W. Bell St. • 681-8550

**Las Palomas**    1085 E. Washington St. • 681-3842

**Marina Restaurant**    2577 W. Sequim Bay Rd. • 681-0577

**Mariner Cafe**    707 E. Washington St. • 683-1055

**McDonald’s**    107 S. 7th Ave. • 683-4192

**Moon Palace**    323 E. Washington St. • 683-6898

**Oak Table**    292 W. Bell St. • 683-2179 • www.oaktablecafe.com

**Old Mill Cafe**    721 Carlsborg Rd • Carlsborg • 582-1583

**Pancho Villa**    271 S. 7th Ave. • 582-1006

**Papa Murphy’s Pizza**    Washington Plaza • 683-8102

**Paradise**    703 N. Sequim Ave. • 683-1977

**Petals Garden Cafe**    1345 S. Sequim Ave. • 683-4541 • www.petalscafe.com

**Quality Food Center (QFC)**    Bell Creek Plaza • 683-1151

**Raindrop**    256861 Hwy. 101 • 452-6360

**Riptide**    380 E. Washington St. • 683-7244

**Rose Tree Cottage Tea Room**    645 W. Washington • 683-2522

**Safeway**    Washington Plaza • 681-2905

**Sawadee Thai Cuisine**    271 S. 7th St. #31 • 683-8188

**Seven Cedars Casino**    270756 Hwy. 101 • 683-7777 • www.7cedarscasino.com

**Son’s Cafe**    206 N. Sequim Ave. • 683-2121

**Subway Sandwiches**    Washington Plaza • 683-8573

**Sunshine Cafe**    127 W. Washington St. • 683-4282

**TacoTime**    110 River Road

**Tailgate Pizza Co.**    Bell Creek Plaza • 683-9600

**Tarcisio’s, The Italian Place**    609 W. Washington St. • 683-5809

**The Buzz**    128 N. Sequim Ave • 683-2503 • www.thebuzzbeedazzled.com

**The 3 Crabs**    101 Three Crabs Rd. • 683-4264 • www.the3crabs.com

**Tootsie’s**    537 W. Washington St. • 683-9524

**Xanadu Grill**    268522 Highway 101 • 681-0928

## MEALS

B/L

L/D

L/D

B/L

B/L/D

B/L

B/L/D

B/L/D

B/L

L/D

L/D

B/L/D

B/L/D

B/L/D

L/D

B/L

B/L/D

L/D

L/D

L/D

L/D

B/L

B/L/D

B/L/D

L

L/D

L/D

L/D

B/L/D

B/L/D

B/L

L/D

L/D

B/L/D

B/L/D

L/D

B/L/D

D

## CUISINE

Continental Cafe, S & S

Steak, Seafood

Chinese

Gourmet Fast Food

Homestyle

Espresso, Cafe

Homestyle, Pizza

Fast Food

S & S, Dessert

Thai

Mexican, American

Seafood, American

Homestyle

Fast Food

Chinese

Gourmet Breakfasts

Homestyle

Mexican

U-Bake Pizza

Seasonal Northwest

Gourmet

Deli, To-Go, Espresso

Desserts, Chocolates

Seasonal Northwest

High Tea, S & S

Deli, Chinese, Espresso

Thai

Daily Specials, Seafood

Vietnamese, American

Subs, Salads, Soup

Homestyle

Mexican Fast Food

Pizza

Italian, American

Icecream, Espresso

Seafood Specialties

Fast Food

Steak, Seafood